

DEVELOPMENT OPPORTUNITY

7437 HIGHWAY 77, PANAMA CITY, FL 32409

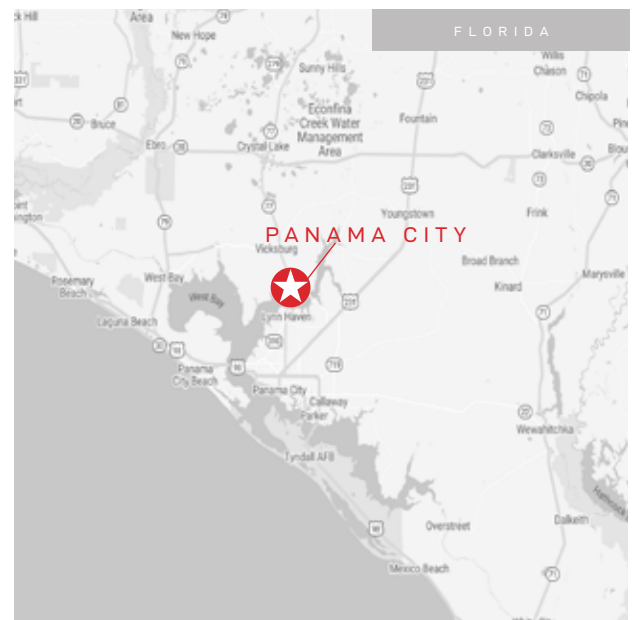


PROPERTY INFORMATION

- Approximately 6 acres at a major intersection with an additional +/- 2 acres available directly accessible through Fulton Street
- Signalized intersection with +/- 36,300 daily traffic on HWY 77 and +/- 11,100 on CR-2321 (source: REGIS, 2022)
- One mile south of future St. Joe Company mixed-use development that will encompass over 1,000 acres and include a projected 1,750 residential units
- One mile west of new DR Horton 700-home residential development

DEMOGRAPHICS

	5 MINUTES	10 MINUTES	15 MINUTES
Population 2022	4,920	22,333	51,020
Projected Population 2027	4,984	23,093	54,041
Average Household Income	\$87,973	\$94,968	\$103,349



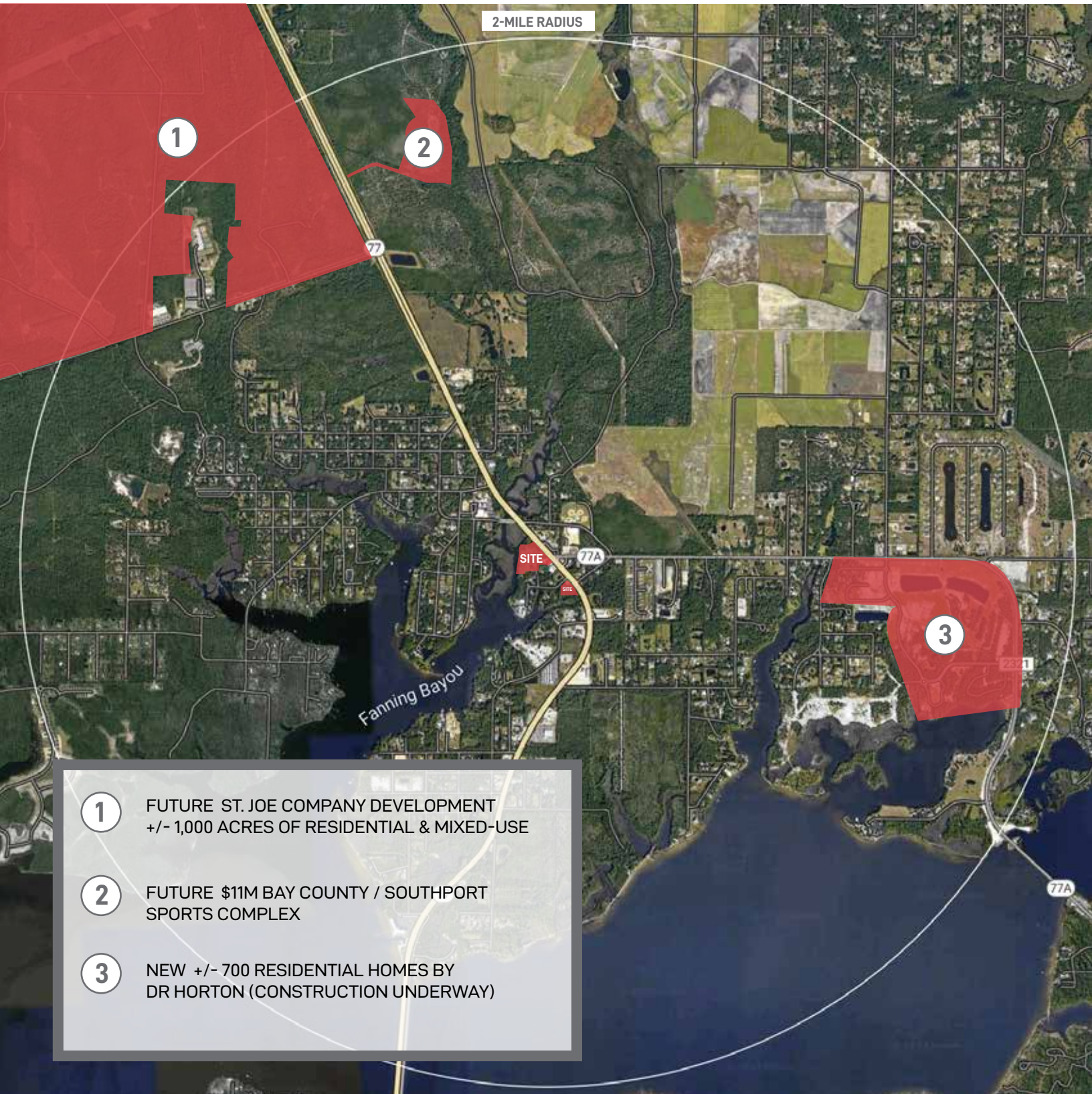
CONTACTS

Nick Addison p / 404.256.9100 e / nickaddison@staffordprop.com
Charlie Haas p / 850.896.2240 e / charlie.haas@countsrealestate.com



DEVELOPMENT OPPORTUNITY

7437 HIGHWAY 77, PANAMA CITY, FL 32409



- 1 FUTURE ST. JOE COMPANY DEVELOPMENT
+/- 1,000 ACRES OF RESIDENTIAL & MIXED-USE
- 2 FUTURE \$11M BAY COUNTY / SOUTHPORT
SPORTS COMPLEX
- 3 NEW +/- 700 RESIDENTIAL HOMES BY
DR HORTON (CONSTRUCTION UNDERWAY)

CONTACTS

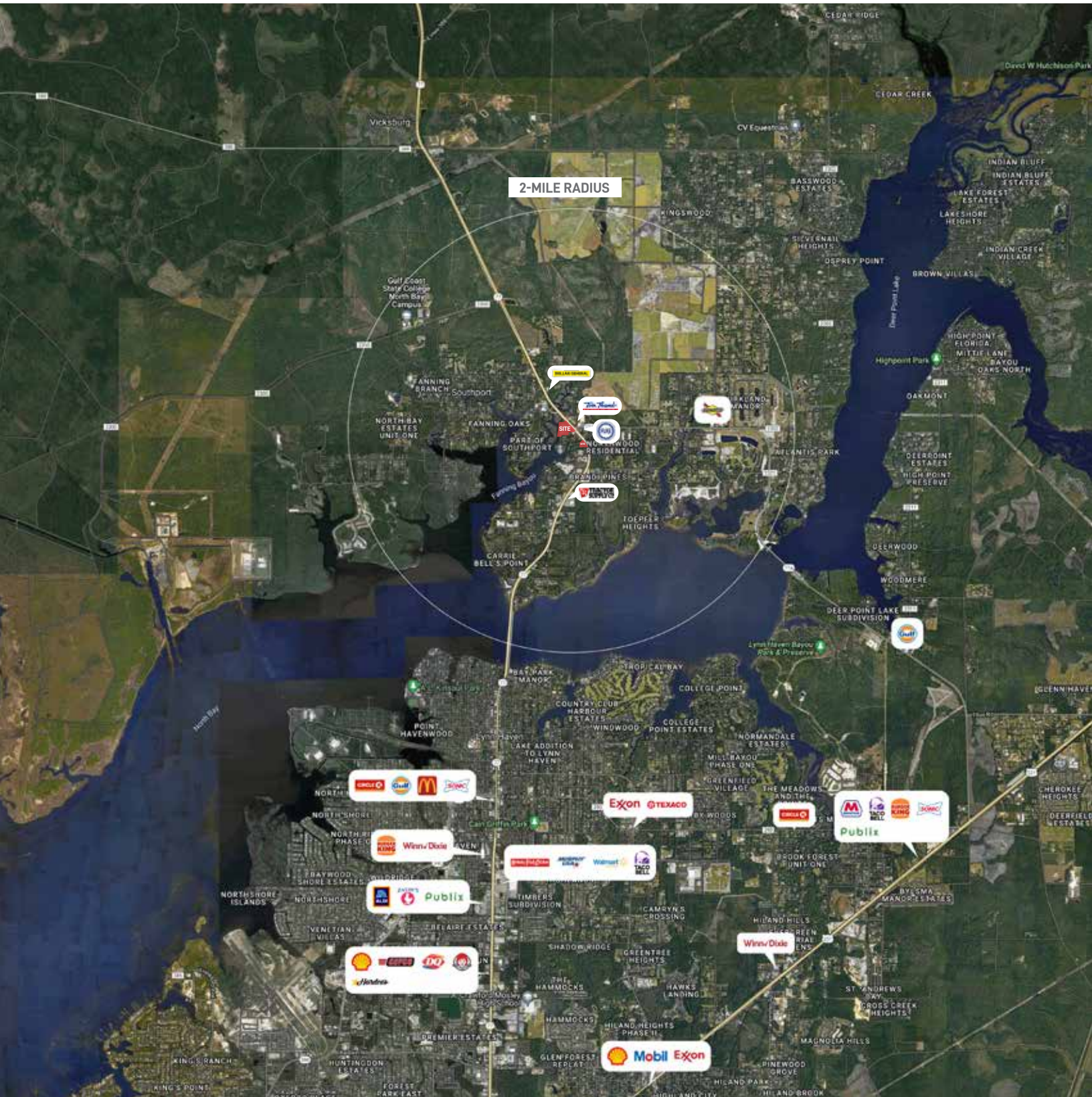
Nick Addison p / 404.256.9100 e / nickaddison@staffordprop.com
Charlie Haas p / 850.896.2240 e / charlie.haas@countsrealestate.com



STAFFORD
Building on the Past. Developing for the Future.

DEVELOPMENT OPPORTUNITY

7437 HIGHWAY 77, PANAMA CITY, FL 32409



CONTACTS

Nick Addison p / 404.256.9100 e / nickaddison@staffordprop.com
Charlie Haas p / 850.896.2240 e / charlie.haas@countsrealestate.com



STAFFORD
Building on the Past. Developing for the Future.