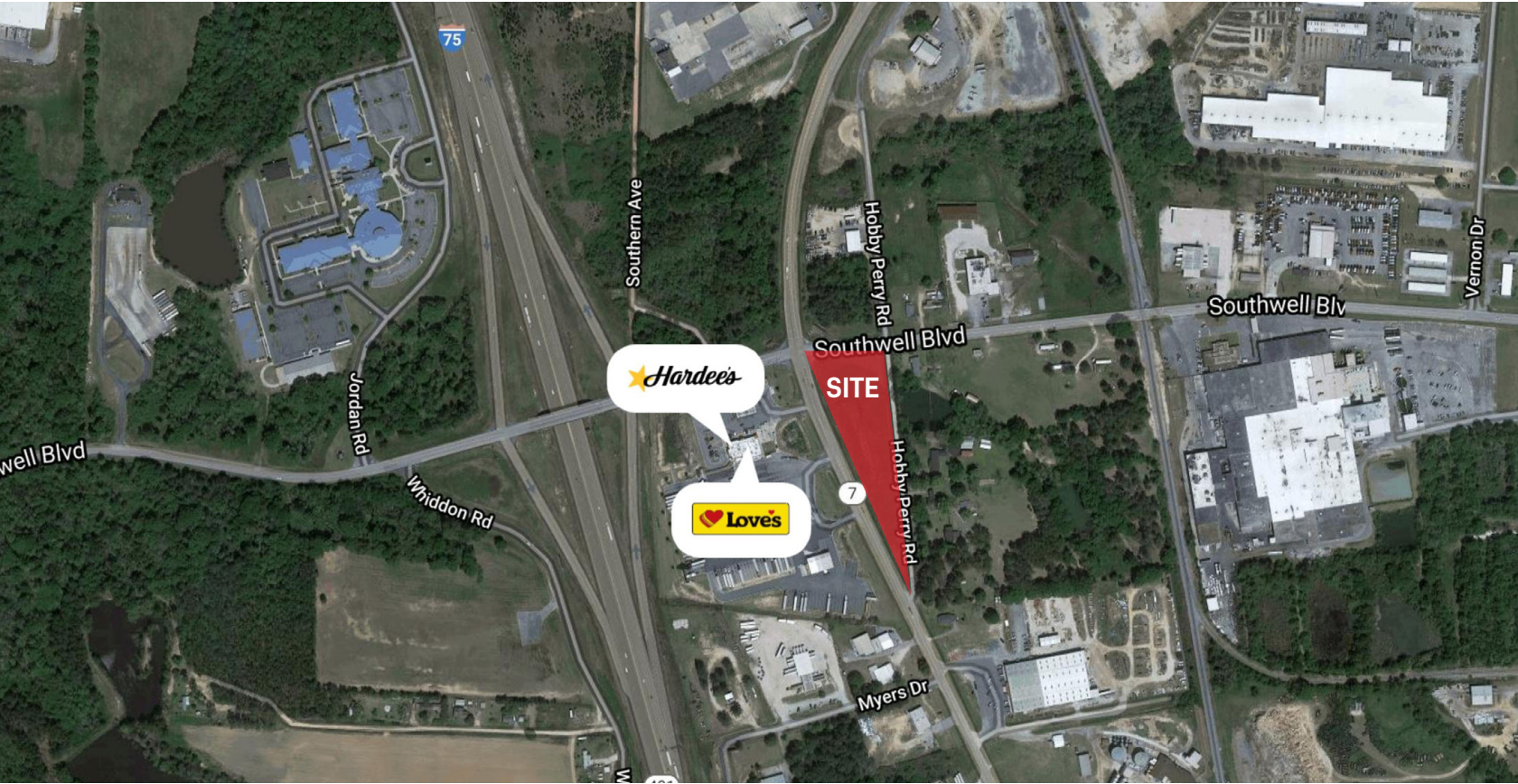


2.14 ACRES

US HWY 41 & SOUTHWELL BLVD, TIFTON, GA 31793

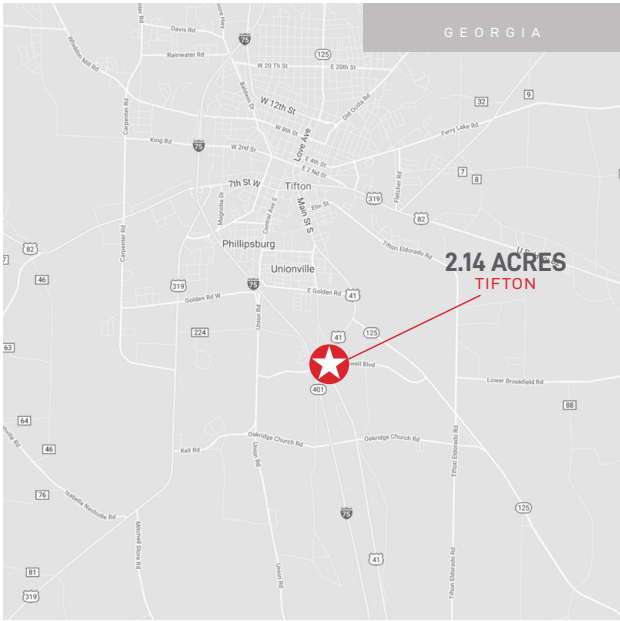


PROPERTY INFORMATION

- 2.14 acres
- Zoned for commercial use
- Available for sale, ground lease, or build-to-suit
- Easily accessible from I-75 and Hwy-41
- 11,800 +/- GA DOT daily traffic count on Southwell Blvd

DEMOGRAPHICS

	1 MILE	3 MILES	5 MILES
Population 2020	513	13,427	20,078
Projected Population 2025	511	13,390	28,376
Average Household Income	\$61,977	\$48,061	\$55,711



CONTACT

Nick Addison c / 404.214.9934 e / nickaddison@staffordprop.com

STAFFORD

Building on the Past. Developing for the Future.